

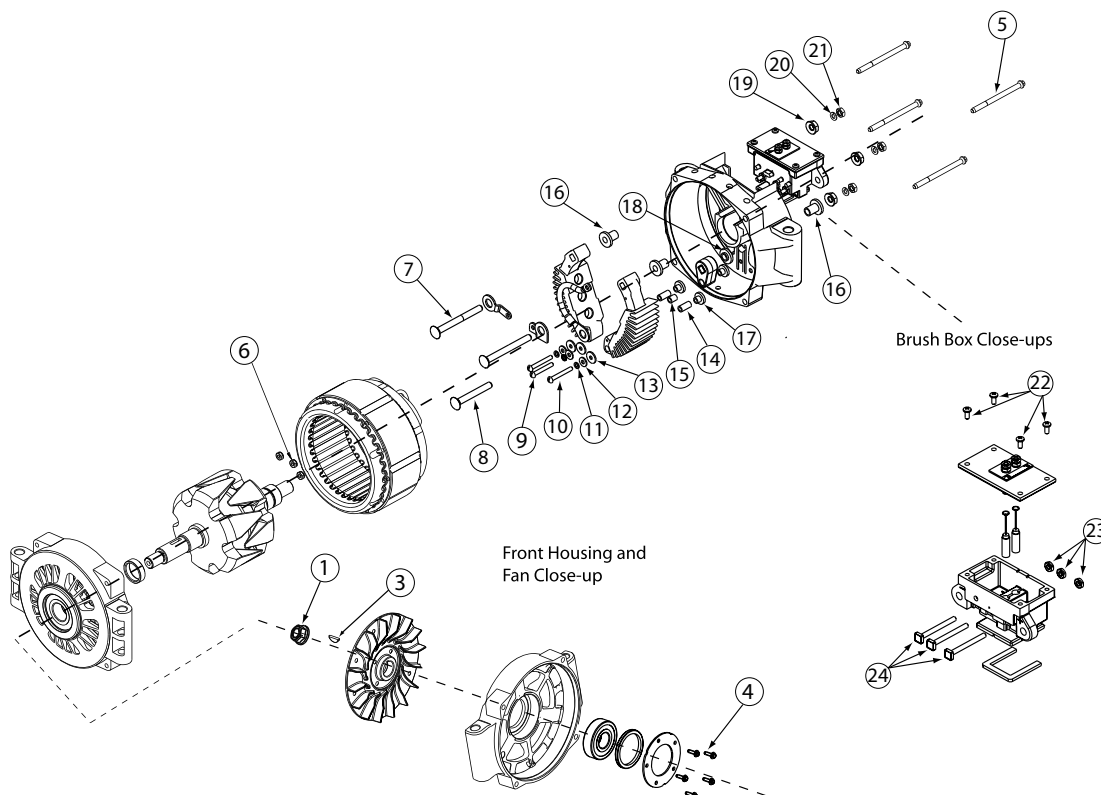
Source: Leece-Neville Heavy Duty Systems Division - Arcade, NY USA
Date: JULY 7, 2017
Bulletin No: TSB-3015
Models: 4000 Series Without Regulators / Rectifiers
Subject: Hardware Kit for 4000 series T-mount alternators K212104775S for AA series units without regulator.

K212104775S

Illustration and key numbers for 4000AA Pad Mount models.

NOTE: All of these components are part of the hardware kit and not available for individual purchase.

4000AA Series Pad Mount



Important: The information contained in this bulletin is intended for use by trained, professional technicians who have the proper tools, equipment, and training to perform the required maintenance described above. This information is NOT intended for 'do-it-yourselfers'; and you should not assume that this information applies to your equipment. If you have any questions regarding this information please visit our website at www.prestolite.com, or contact our technical service department at:

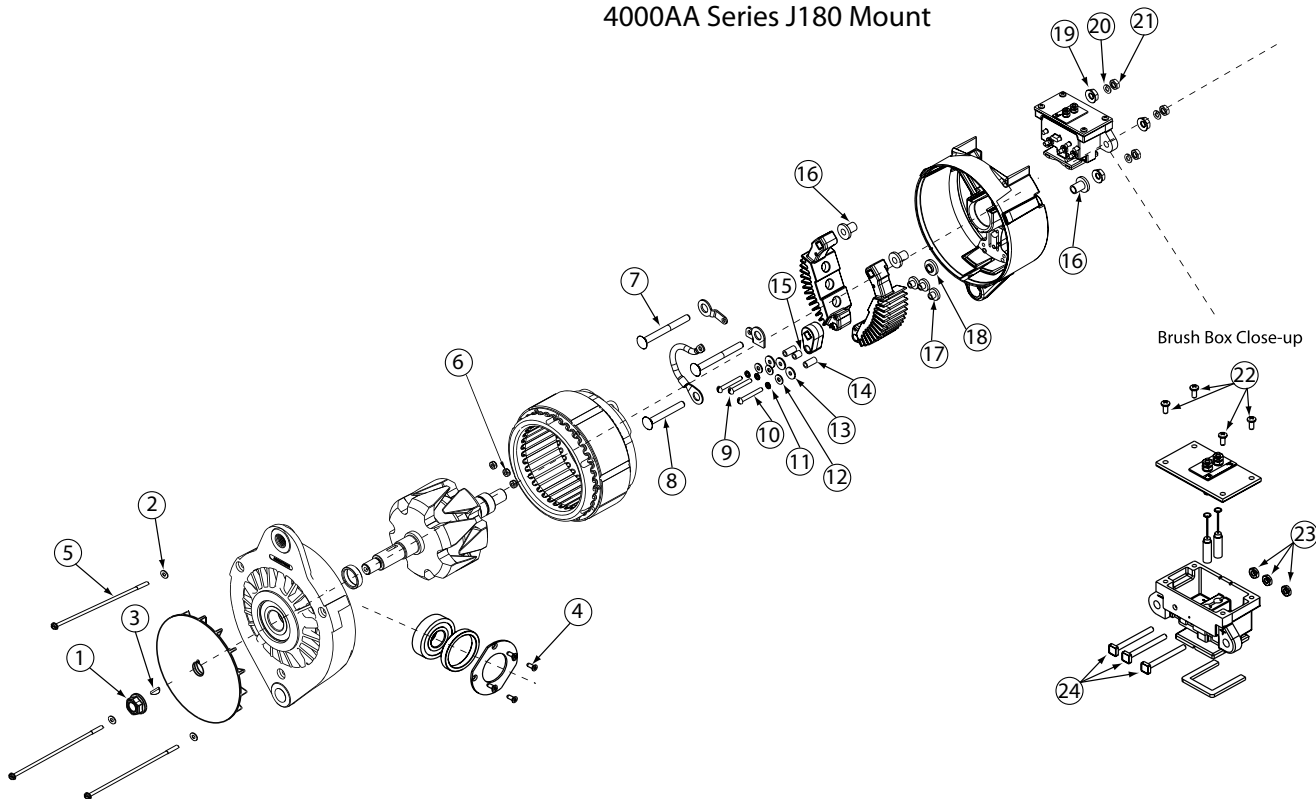
Date: JULY 7, 2017

Bulletin No: TSB-3015

Illustration and key numbers for 4000AA J180 Mount models.

NOTE: All of these components are part of the hardware kit and not available for individual purchase.

4000AA Series J180 Mount



Important: The information contained in this bulletin is intended for use by trained, professional technicians who have the proper tools, equipment, and training to perform the required maintenance described above. This information is NOT intended for 'do-it-yourselfers', and you should not assume that this information applies to your equipment. If you have any questions regarding this information please visit our website at www.prestolite.com, or contact our technical service department at:

Date: JULY 7, 2017

Bulletin No: TSB-3015

| Description | Qty. | Key | Where used |
|------------------------|------|-----|---|
| NUT, 5/8-18, LOCK | 1 | 1 | Fan Nut |
| WASHER, FLAT#10 | 3 | 2 | Thru-Bolt flat washer |
| KEY, WOODRUFF #8 | 1 | 3 | Shaft key |
| SCREW, THREAD FORMING | 4 | 4 | Front housing retainer plate holding screw |
| SCR TPG 10-32X.62 1/4H | 5 | 4 | Front housing retainer plate holding screw |
| THRU.BOLT #10-32 | 3 | 5 | Thru-Bolts holds Alternator together |
| BOLT, THRU 1/4X20 4.12 | 4 | 5 | Thru-Bolts holds Alternator together |
| BOLT, THRU 1/4X20 3.50 | 4 | 5 | Thru-Bolts holds Alternator together |
| NUT | 3 | 6 | Hold stator leads brush box |
| BOLT 5/16 X 3-1/4" | 2 | 7 | AC bolt |
| BOLT 5/16 X 2-1/2" | 1 | 8 | AC bolt |
| SCREW #10 X 1-3/8" | 1 | 9 | Attaches AC bolt holder to alternator rear housing. |
| Screw | 2 | 10 | Attaches rectifier heatsink to rear housing. |
| LOCKWASHER | 3 | 11 | Lockwashers for bolts that attach AC bolt holder and rectifier heatsink |
| WASHER FLT.203-.500-.0 | 3 | 12 | Flatwashers for bolts that attach AC bolt holder and rectifier heatsink |
| Washer | 3 | 13 | Insulating washer for bolts that attach AC bolt holder and rectifier heatsink |
| Bushing | 2 | 14 | Insulating bushing for bolts that attach rectifier heatsink |
| BUSHING, INSULATION | 1 | 15 | Insulating bushing for bolt that attach AC bolt holder to alternator rear housing |
| Bushing | 3 | 16 | Insulating bushing for AC bolts |
| Bushing | 3 | 17 | Insulates rectifier heatsinks from alternator rear housing |
| Bushing | 1 | 18 | Insulates AC bolt holder from alternator rear housing |
| NUT, TENZ - 5/16-18 | 3 | 19 | Secure AC bolts to rear housing |
| LOCKWASHER | 3 | 20 | Lockwasher for customer cables |
| HEX NUT | 3 | 21 | Nut to attach customer cables |
| SCREW | 4 | 22 | Screws that attach remote regulator cover |
| NUT, STEEL #10-32 | 3 | 23 | Nuts that hold AC taps in brush box |
| Stud | 3 | 24 | AC bolt |

Important: The information contained in this bulletin is intended for use by trained, professional technicians who have the proper tools, equipment, and training to perform the required maintenance described above. This information is NOT intended for 'do-it-yourselfers'; and you should not assume that this information applies to your equipment. If you have any questions regarding this information please visit our website at www.prestolite.com, or contact our technical service department at: